

MAKE YOUR SMART MOVE



About Us:

Envision is a leading system integrator and solution provider, addressing Middle East, North Africa and Asia Pacific regions with development center in India, for end to end IT solutions for enterprise automation, and business process improvements. Our expertise in several industry verticals Like Oil & Gas, Utilities, Facility Management, Infrastructure, Manufacturing, Banking & Insurance, Retail and Distribution helps our customers with cutting edge solutions for their present and future business needs. Envision's flagship product iPortman addresses end to end automation needs of Sea ports.

We solve our client's challenges by addressing their present and future needs, to optimize their costs, enhance return on investment, manage growth, capitalize market opportunities and deliver better value to their investment in IT and Automation.

Our core practices in ERP, EAM, Datawarehouse and Business Intelligence deliver immense value to our clients with proven expertise and ready to deploy solutions. Our Proven Project Management methodologies with stringent quality assurance process assures best delivery, assured returns and sustainable value for our client's investments to help them to scale up their operations for a better competitive advantage against their competition.

Solution Partners :



The Achievements:

Awarded "THE BEST PARTNER 2009" for
Datawarehouse Solution

Honoured as a **PREMIER PARTNER** to IBM
from July 2010 for its best performance in
MAXIMO EAM Space.



Our services:



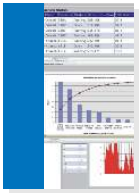
Enterprise Resource Planning :

Envision provides an end to end integrated ERP solutions which helps organizations to manage internal and external resources. Our competency in Microsoft Business Solutions like Microsoft Dynamics, Axapta, Navision, Great Plains, MS CRM, SAP Business One helps our clients reap the benefits on investments in automation. Our extensive implementation experience, strong internal development team with pre build applications for HR & Pay roll function for various countries, solutions for various industry verticals helps our client to quickly adopt the solution to their internal business processes.



Enterprise Asset Management:

A premium partner having strong Tivoli Maximo practice with experience across the versions of Maximo. We have one of the strongest team in Middle East and Asia Pacific with highest number of Maximo certified consultants. We provide end to end implementation of Maximo, Upgrades, Enhancements, and Integrations to other applications like SCADA, BMS, DCS, and ERPs including Post implementation support. Envision also provides Implementation services for Oracle EAM, SAP Plant Maintenance and Axapta EAM



DW & Business Intelligence :

Datawarehousing Software solution acts as a repository to an organization's electronically stored data. It helps the organization to facilitate reporting and analysis.

With the support of BI technologies we provide organizations historical, current, and predictive views of business operations and also the common business functions such as reporting, analytics, data mining, business performance management, benchmarking and predictive analytics.



iPortman:

An integrated port management web based solution to effectively capture port operations involving Marine, Vessel, Cargo, Stockyard, Logistics, Port services, Billing, Security, Asset and Facilities Maintenance Management adhering to compliance and standard documentation procedures.



Resource Augmentation:

Envision's resource augmentation team can help you in bringing qualified and competitive resources on board for all your internal and external ongoing projects on hand. Apart from the other niche services, we offer both contractual and permanent resource augmentation services. Our team assures you quicker response times to your hiring needs, Envisions Staffing will fit the bill perfectly.



Envision Advantages:

- End to end solutions for Medium and Large Enterprises.
- Client centric approach, value for the investment.
- Proven internal Quality processes for Delivery, Risk Management and Value delivery.
- Proven Track record of handling multi location and complex implementations.
- Flexible, Dependable, Competitive and Long term Relation Oriented partner.



sales@envionesl.com

www.envionesl.com

Middle East and North Africa:

Envision Middle East Solutions FZ- LLC.

PO BOX # 500415, G23, Building 9,

Dubai Internet city, DUBAI, UAE

Ph: +971 4 4456970,

Fax: +971 4 4456971.

India, Nepal, Bangladesh, Srilanka:

Envision Enterprise Solutions Pvt Ltd.

#308 & 309, TOPAZ, AMRUTHA HILLS,

Punjagutta, Hyderabad, INDIA 500082

Phone : 91 40 65343853,

Fax: +91 40 40130892.

Asia Pacific:

Envision Enterprise Solutions Asia Pacific Pte.Ltd.

15 Enggor Street,#08-04,

Realty Centre, Singapore 079716.

Ph: +65 62950102,

Fax: +65 62955059.